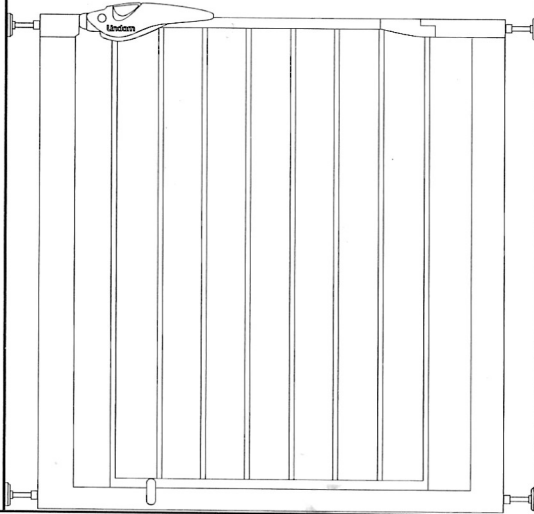


# Lindam®

For the Safest Start in Life®



MK0091

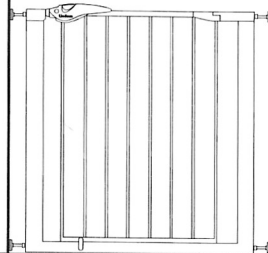
i

[www.lindam.com](http://www.lindam.com)



i

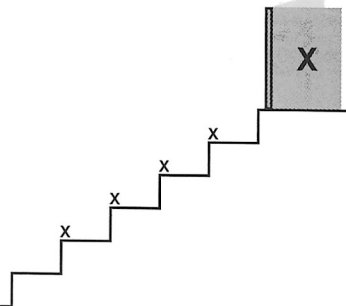
76cm - 82cm  
29.92" - 32.5"



i



i



# IMPORTANT! READ AND FOLLOW THESE INSTRUCTIONS CAREFULLY AND KEEP FOR FUTURE REFERENCE

## Introduction

Please read the instructions thoroughly to ensure proper installation. Demo installation videos are also available on [www.lindam.com](http://www.lindam.com) to aid with installation. Please immediately inspect your safety gate upon receipt. If you see any damage do not assemble gate and please go to back page of the instruction booklet for website or Consumer Relations Representative information. We recommend that you carry out the installation away from young children as some of the smaller components may present a choking hazard when loose.

## Important Information

**There is a gap between your gate frame and handle. This is not a defect. The gap on your gate will close once it is properly mounted.** Please check the gate on a regular basis to ensure gate and parts are all in proper working order. If the gate is used at the bottom of the stairs, please place towards the front of the lowest stair. The safety barrier must not be fitted across windows. Ensure gate is attached between two clean structurally sound surfaces. Ensure appropriate fixings are used for drywall, wood, brick, etc. If wall plugs are provided with the gate and do not secure to the wall satisfactorily, consult with a hardware store for your proper wall plug application. If additional parts are required for this gate, please go to back page of the instruction booklet for website or Consumer Relations Representative information. **Do not use this gate at the bottom of stairs without using all four wall cups. For maximum safety, use 4 Wall Cups with Sticky Pads when installing the gate in all locations.**

## Disclaimer

Any safety gate which has been subjected to misuse, abuse, abnormal use, excessive wear and tear, improper assembly, negligence, environmental exposure, alteration or accident, or has had its serial number altered or removed invalidates any and all claims against the manufacturer. Any damage to property during installation of your safety gate is the sole responsibility of the end user.

# WARNING!

- **WARNING** - Incorrect installation can be dangerous.
  - **WARNING** - Do not use the safety barrier if any components are damaged or missing.
  - **WARNING** - The safety barrier must not be fitted across windows.
  - **WARNING** - Stop using the barrier if the child is capable of climbing it.
  - **WARNING** - Do not leave this gate open at any time. Remove the gate if not in use for long periods.
  - **WARNING** - Never use without wall cups.
  - **WARNING** - Take care when stepping over the bottom bar to prevent tripping.
  - **WARNING** - Tripping hazard do not use this gate at the top of stairs.
- 
- Safety barrier has been designed for use with children up to 24 months of age.
  - Never allow older children to climb on or over the barrier as this could result in an accident.
  - Safety barrier should be checked regularly to ensure that it is secure and functioning in accordance with these instructions.
  - Any additional or replacement parts should only be obtained from the manufacturer or distributor.
  - This product will not necessarily prevent all accidents. Never leave child unattended.
  - Eventually your child will reach an age at which they are capable of opening your gate. Children will develop physically and mentally at different rates, therefore it is important that you monitor your child's capabilities.
  - A swinging gate can trap small hands.
  - Do not remove the safety notices, you may not always be the user.
  - Retain these instructions as you may wish to reposition the gate.
  - Adult assembly required.
  - Install according to manufacturer's instructions.
  - To clean: Use mild soap and wipe with a damp cloth.
  - Safety barrier conforms to EN 1930:2011.
  - Check that the safety barrier is correctly closed.
  - This safety barrier is for domestic use only.
  - This safety barrier has a manual closing system.

## Lifetime Guarantee

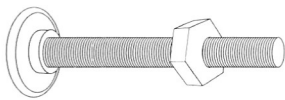
All Lindam safety gates and barriers come with a lifetime guarantee. Terms and Conditions apply. For terms and conditions and in order to qualify please register your details at [www.lindam.com](http://www.lindam.com) within 30 days of purchase.

**i**

A (x4)

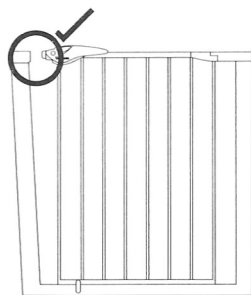


B (x4)

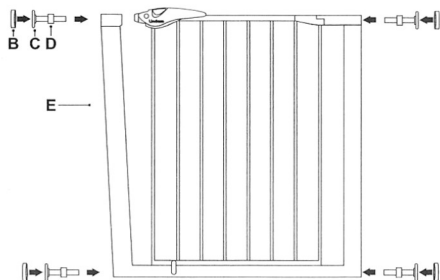
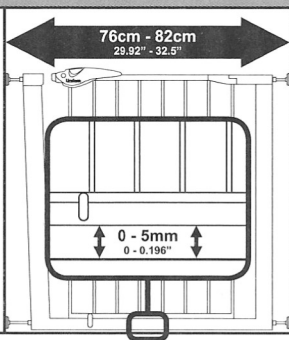
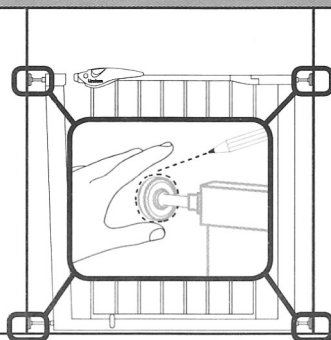
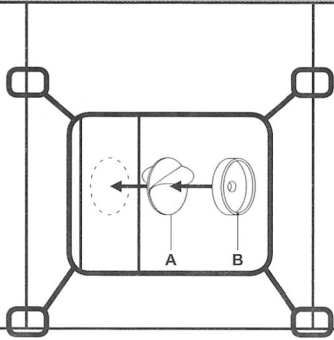
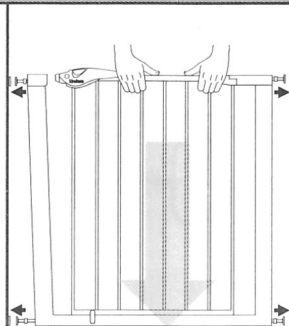


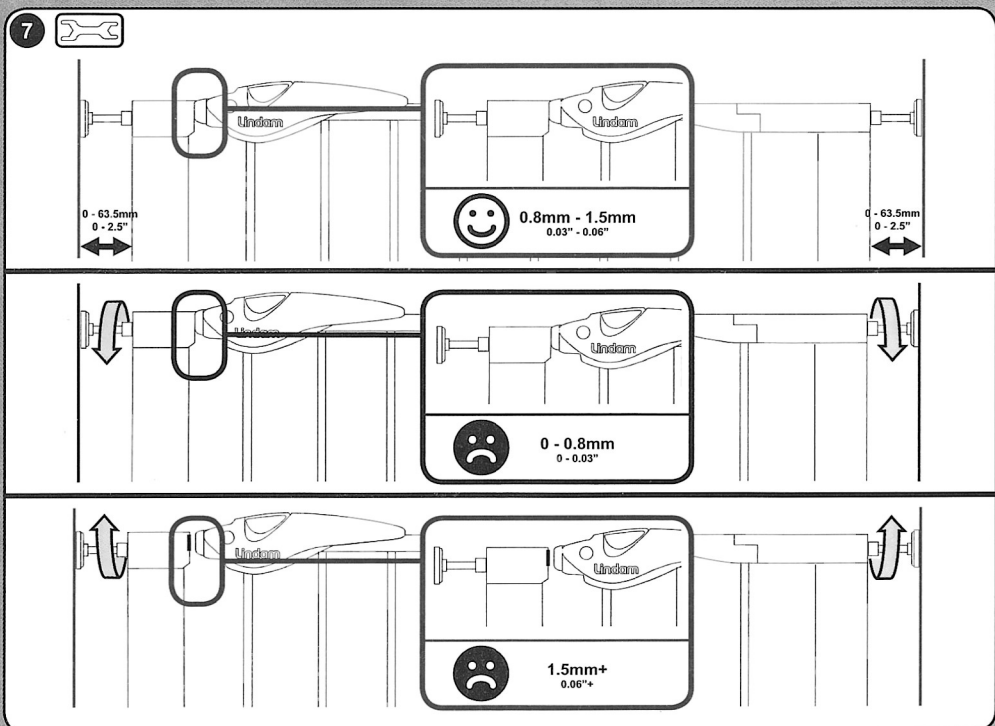
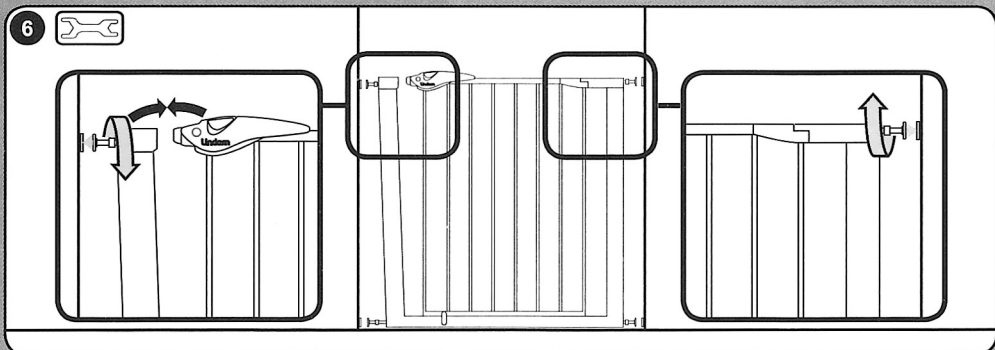
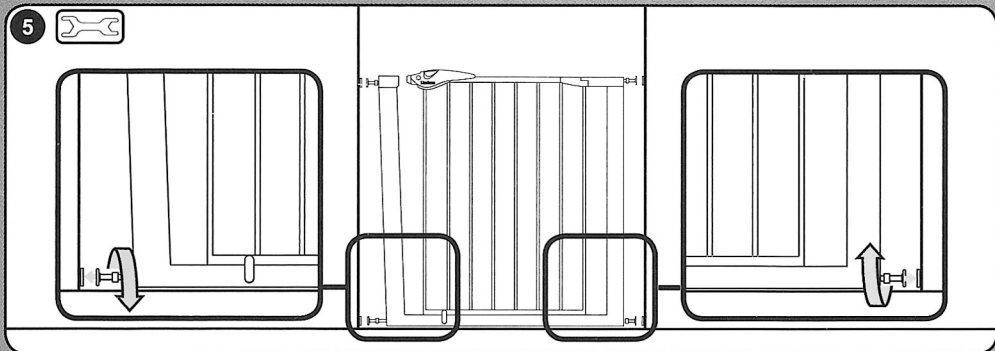
C (x4)

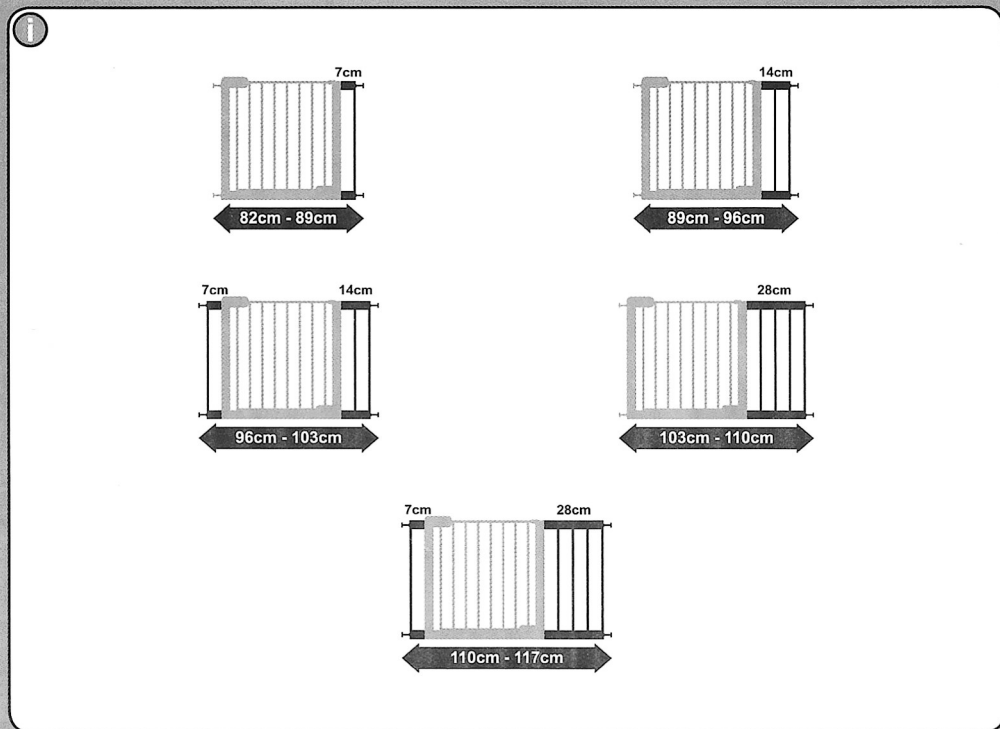
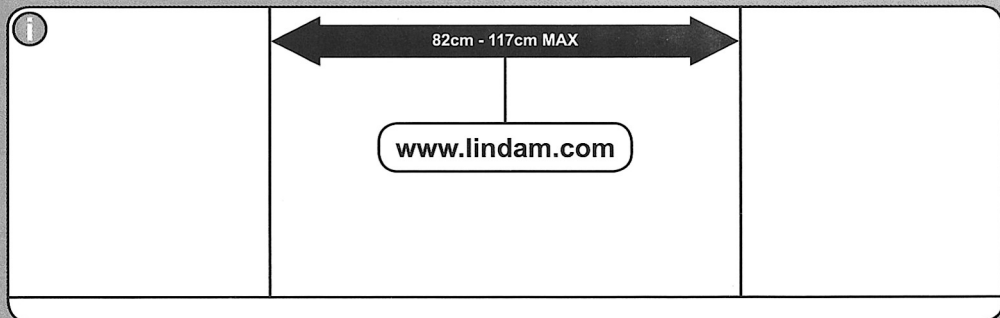
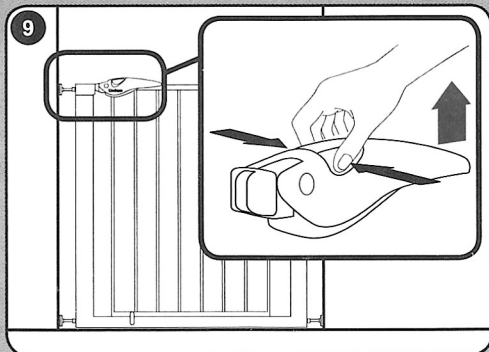
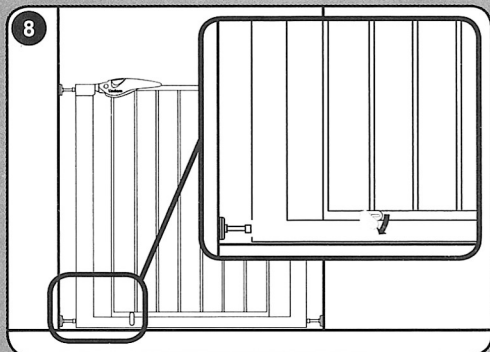
D (x4)



E (x1)

**1****i****2****3****4**





**Lindam**<sup>®</sup>  
For the Safest Start in Life<sup>®</sup>

© 2015 Lindam Limited

Lindam Limited | Unit 760 | Thorp Arch Trading Estate | Wetherby | West Yorkshire | LS23 7FW | England  
[www.lindam.com](http://www.lindam.com)